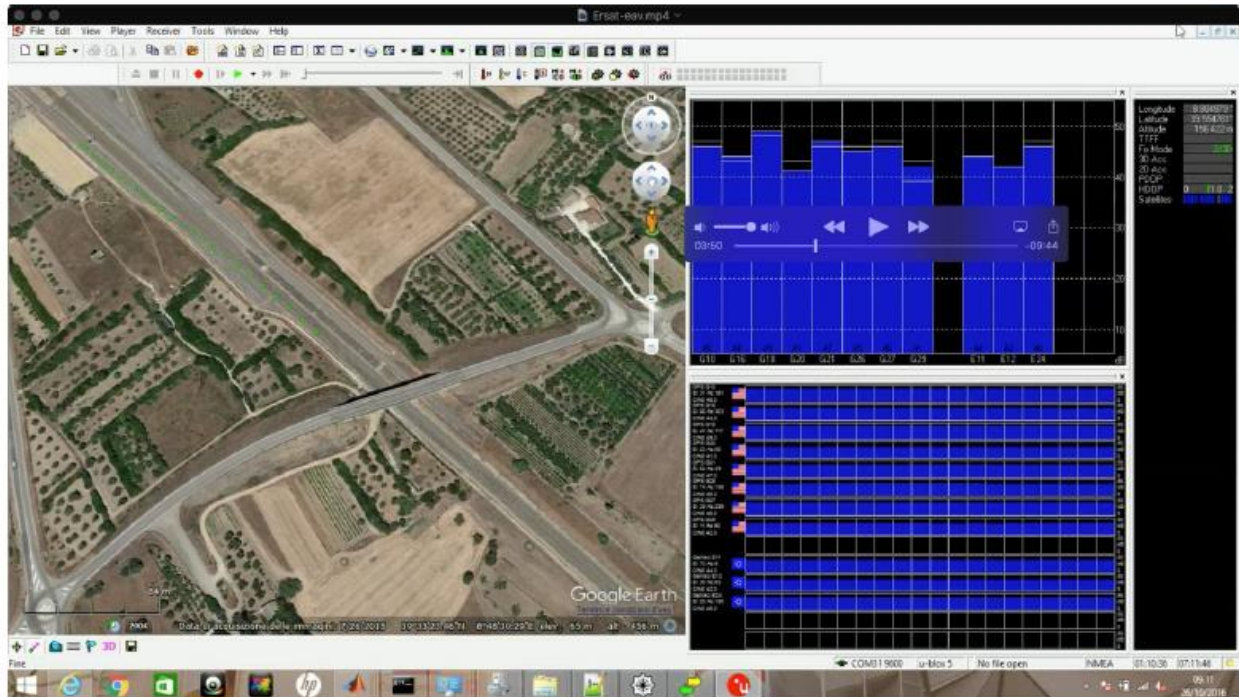
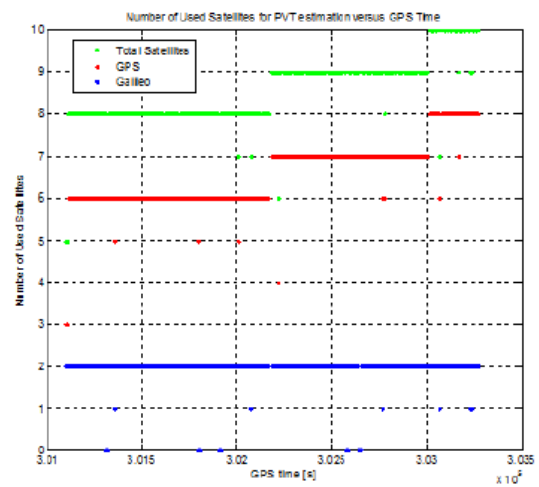
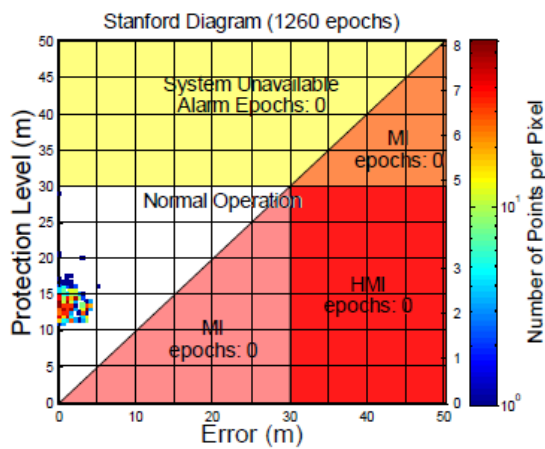


First Fix of GALILEO in the ERTMS train control system

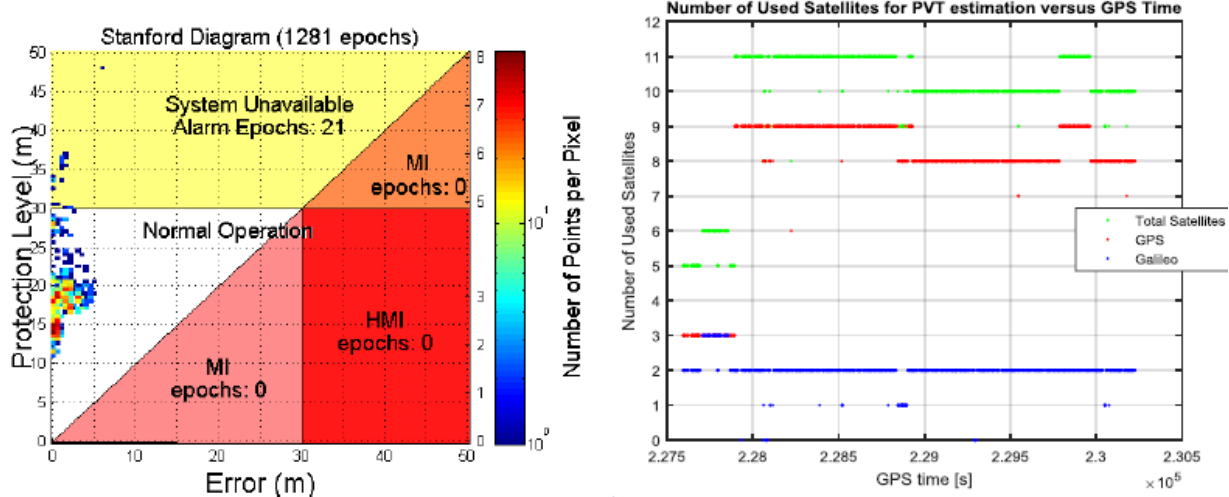
Scenario 1:

- Condizioni Nominali
- GPS+ Galileo
- 2016/10/24 – San Gavino - Cagliari



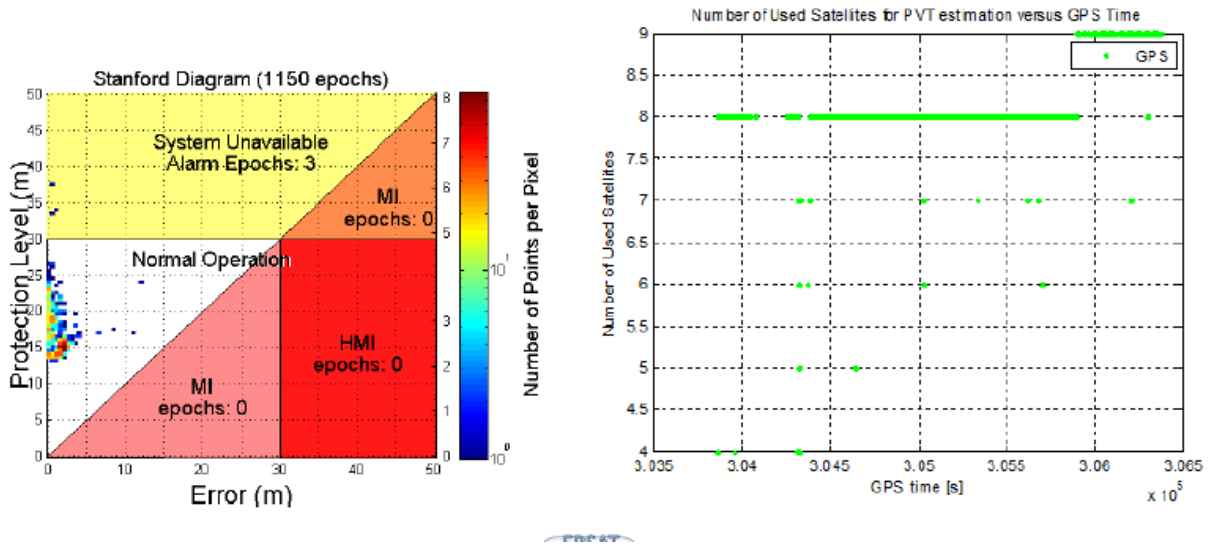
Scenario 2:

- Faulty satellites
- GPS+ Galileo
- 2016/10/25 – San Gavino - Cagliari



Scenario 3:

- GPS only
- 2016/10/26 – San Gavino - Cagliari



Radiolabs - a Research Consortium between Ansaldo STS, Hitachi System CBT, University Roma Tre, University l'Aquila, University Tor Vergata – is involved on high integrity GNSS solutions for trains and is coordinating the RHINOS project for pursuing a global standard solution (www.radiolabs.it, <http://www.radiolabs.it/en/first-rhinos-workshop-at-university-of-stanford-marked-bold-commitment-on-high-integrity-gnss-for-ertms-system/>)