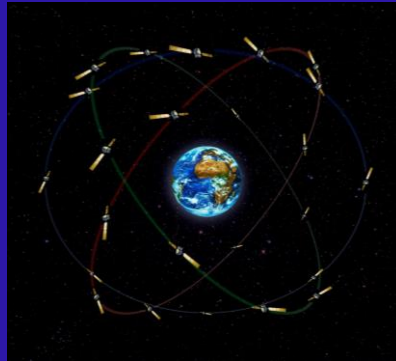




**High Integrity Navigation Overlay Services For Railway
Applications: a selected example of Italian GNSS perspective**

***Mario Caporale, Alessandro Neri, Alberto Tuozi
ICG – 10 Boulder***

Italy and Satellite Navigation



Italy is one of the four major contributors to the European GNSS

Italian national strategy based on use on EU systems Galileo and EGNOS and on interoperability with other GNSSs; Italy hosts one of the Galileo Control Centre

Italy recognises the potentiality of GNSS to be a pillar for innovation of the society and for SME development

Italy recognises the potentiality of the integration among Navigation, Telecommunication and Earth Observation disciplines

The Italian Space Agency have undertaken initiative to develop pre-operational project for several applicative sectors.



Selected Sectors and Priorities

Mainly the following sectors have been addressed:

Maritime

Civil Aviation

Road (including hazardous transportation)

Infomobility

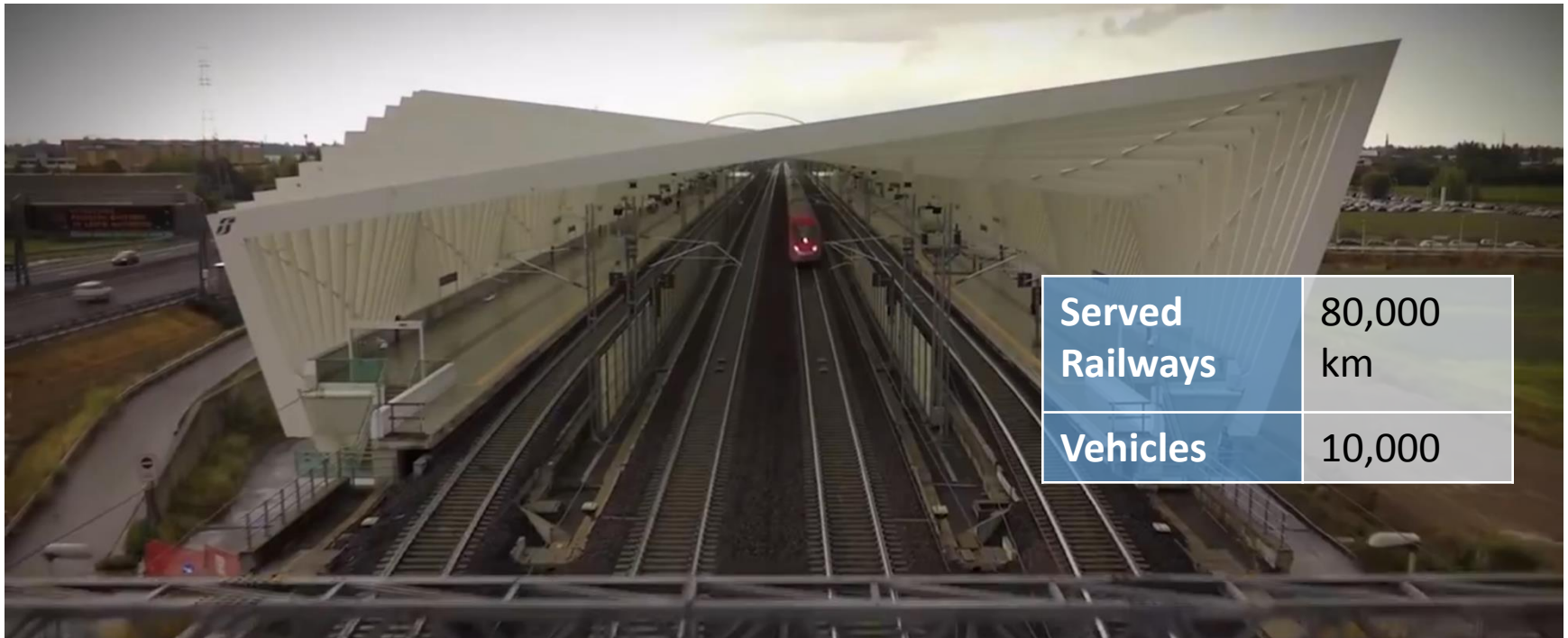
Rail

Among other programmes undertaken:

- **PRESAGO project to define procedural methods and procedures required for PRS (Public Regulated Service - the Galileo classified service)**
- **SENECA project to promote the GNSS based innovation on Civil Aviation**
- **Several SME initiatives supporting development of selected applications (e.g. UAV, interport management) and technology developments (e.g. innovative antennas, atomic clocks)**

ASI, recognising the importance of the rail sector and the potentiality for satellite based innovation (particularly for regional rail safety and efficiency enhancement), is fostering the role of the Satellite Navigation and Telecommunication for rail

ERTMS-ETCS Market Evolution



Served Railways	80,000 km
Vehicles	10,000

- ERTMS-ETCS (European Rail Traffic Management System – European Train Control System) developed in Europe for high speed lines is *de facto* the railways standard train control system being adopted in most new lines and major upgrades.
- By fact, major limitation to its extensive adoption (i.e. local and regional lines, freight lines) is the cost associated with its implementation and maintenance

Why satellite technology?



Main advantages

- Reduction of operational and maintenance cost
- Increasing of line capacity

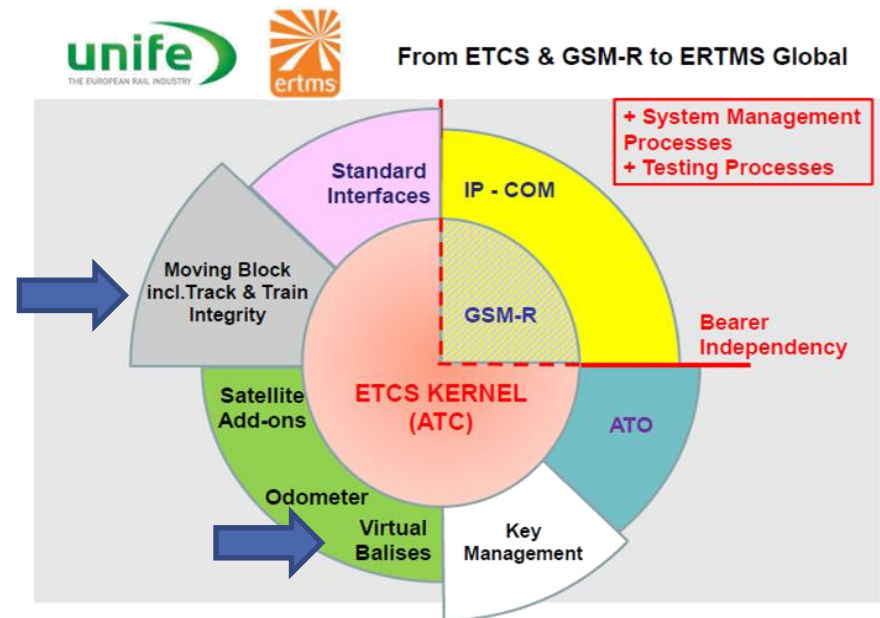
Market perspective:

- Cost-effective solution to increase safety on low traffic lines
- Increase traffic on many lines

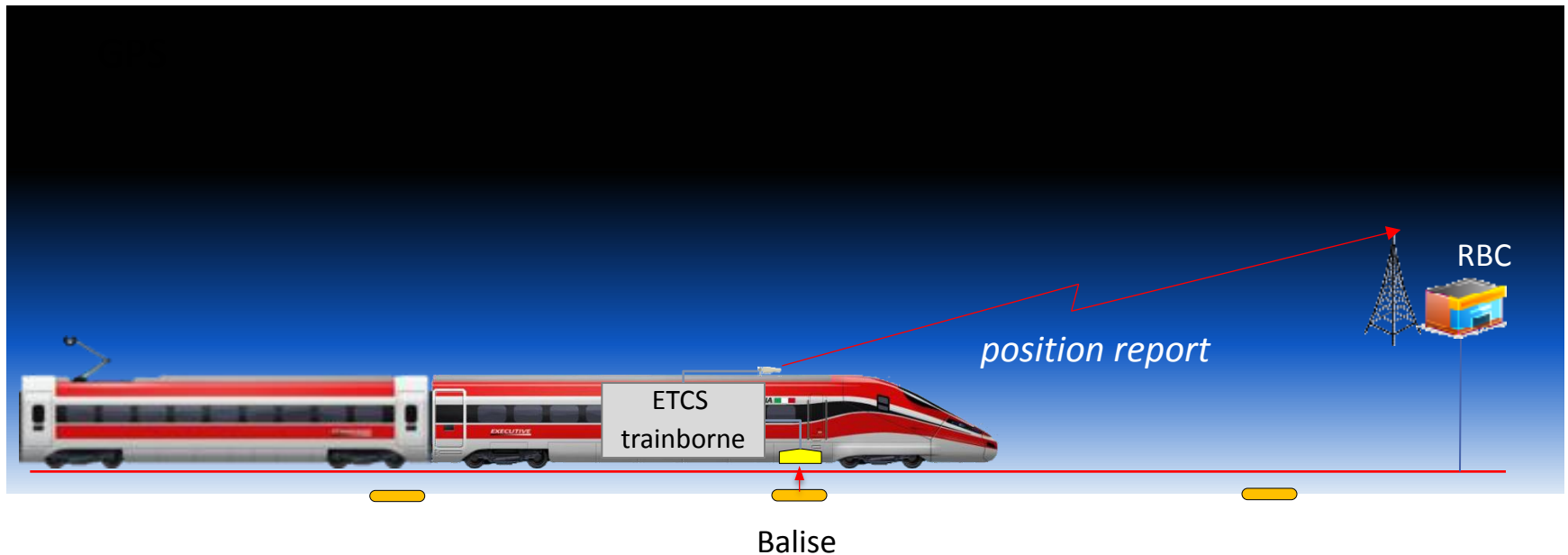
Main challenge:

- Fulfill the **Safety Integrity Level SIL-4** requirements in terms of THR (Tolerable Hazard Rate) imposed for railways

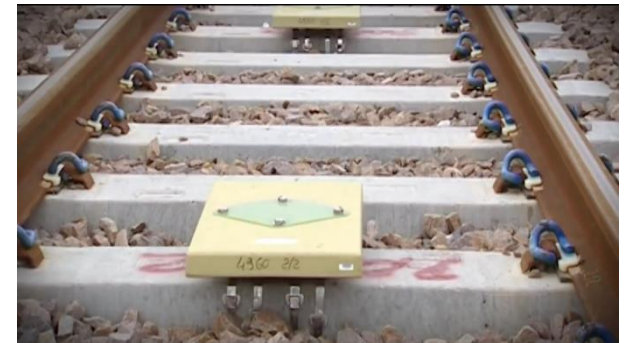
$$\text{THR} \leq 10^{-9}/\text{h}$$



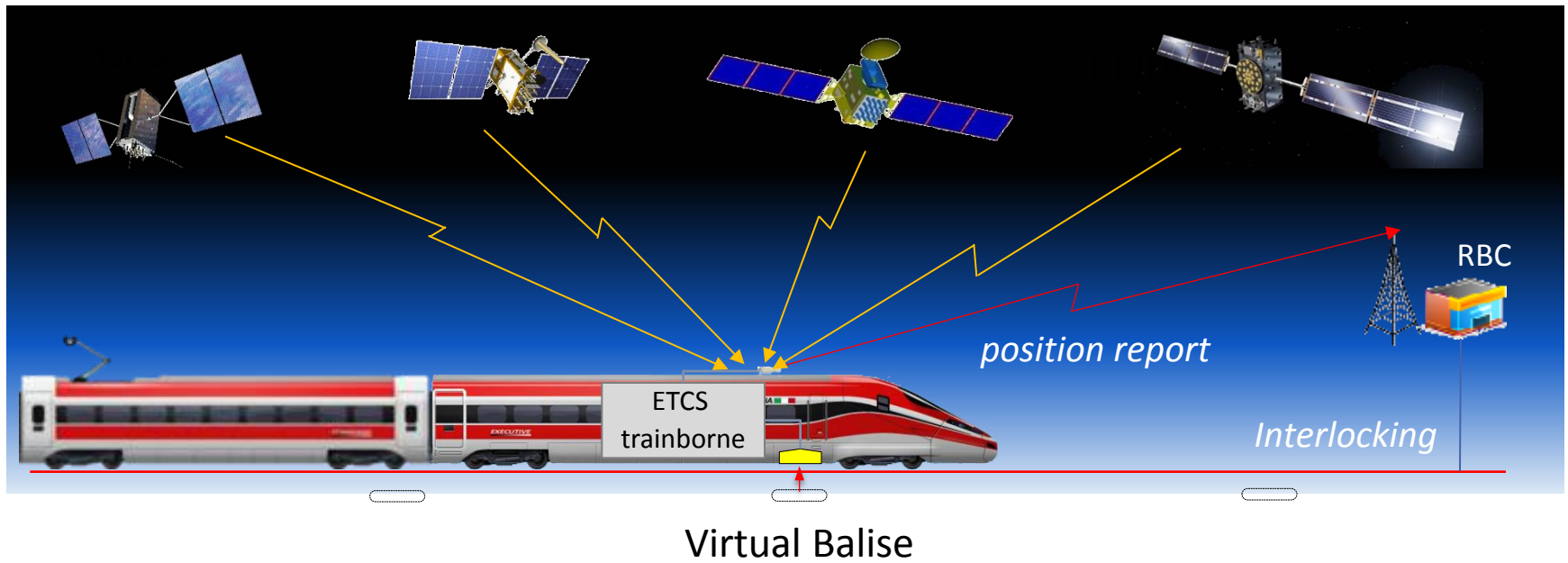
ERTMS/ETCS Train Localization



- In ERTMS/ETCS Train location is determined by means of **Balises** and **Odometry**
- The Balises are transponders deployed at georeferenced points
- The odometer provides the relative positioning w.r.t. the last balise
- When the Balise Reader energizes a balise, it receives a message with the balise Id
- The on board computer (EVC) sends a position report to the Radio Block Center



ERTMS/ETCS – GNSS based Train Localization



- The GNSS Location Determination System generates the same signals produced by a Balise Reader detecting a physical Balise, through the same logical and physical interface, then emulating the Balise reader behavior with respect to the train equipment.



- In this way the On Board ERTMS/ETCS location determination functions do not need to be changed.

- GNSS based train location determination can be considered a disruptive technology.
- It will succeed in replacing the current technologies based on balises and track circuits if and only if it will be **cost-effective**.



THR $\leq 10^{-9}/h$

Functionality	Current Technology	SIS Integrity Monitoring	Augmentation	Accuracy
Train Location Determination • Single track	Based on Balise	X	X	Medium
Train Location Determination • Multiple tracks	Based on Balise, Track Circuit	X	X	Medium, High
Train Integrity	Track Circuit + On Board Circuitry	X		High



ERTMS ON SATELLITE – Enabling Application Validation

Enhanced Railway Signalling Application

IP Network

4G
(Public
versus
Dedicated)

Satellite-based enhanced localisation

Multiconstellation

Local Area Trusted
Augmentation Services

Localization in GNSS
denied Areas

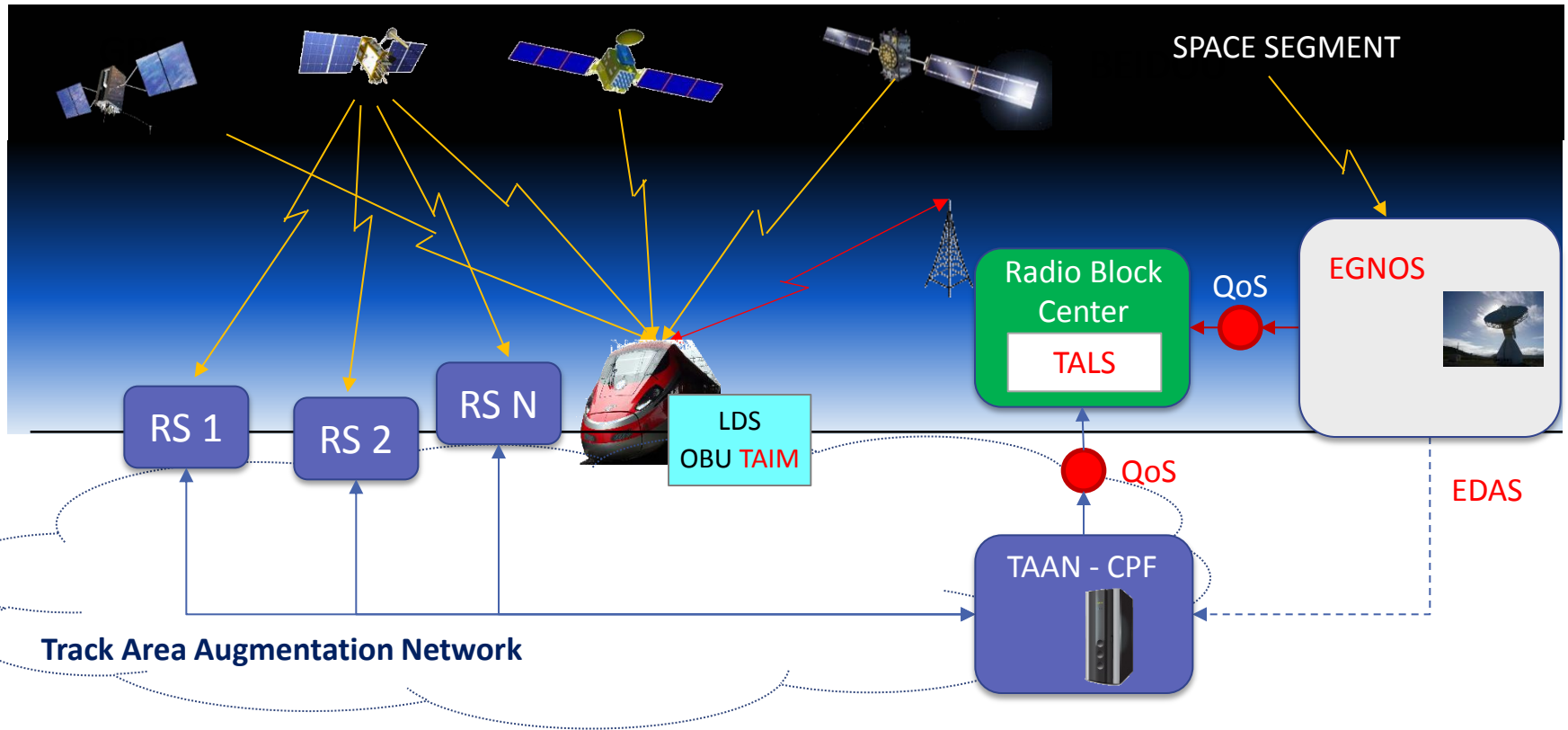
EGNSS-based Localisation

GPS

GALILEO

EGNOS

ERSAT EAV High Integrity Augmentation Architecture



CPF	Central Processing Facilities
TALS	Track Area LDS Server
RS	Reference Station
EDAS	EGNOS Data Access Service
LDS OBU	Location Determination System On Board Unit

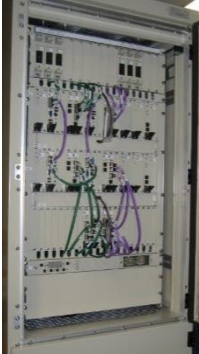
3InSAT Test Bed (ESA Artes 20)



Reference Station



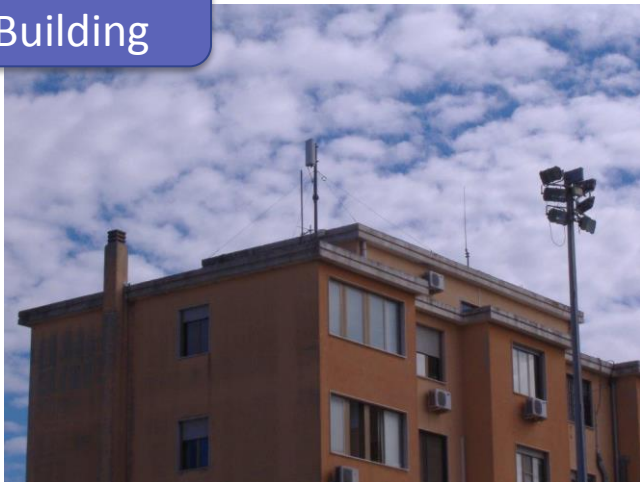
RBC



TALS



RBC Building



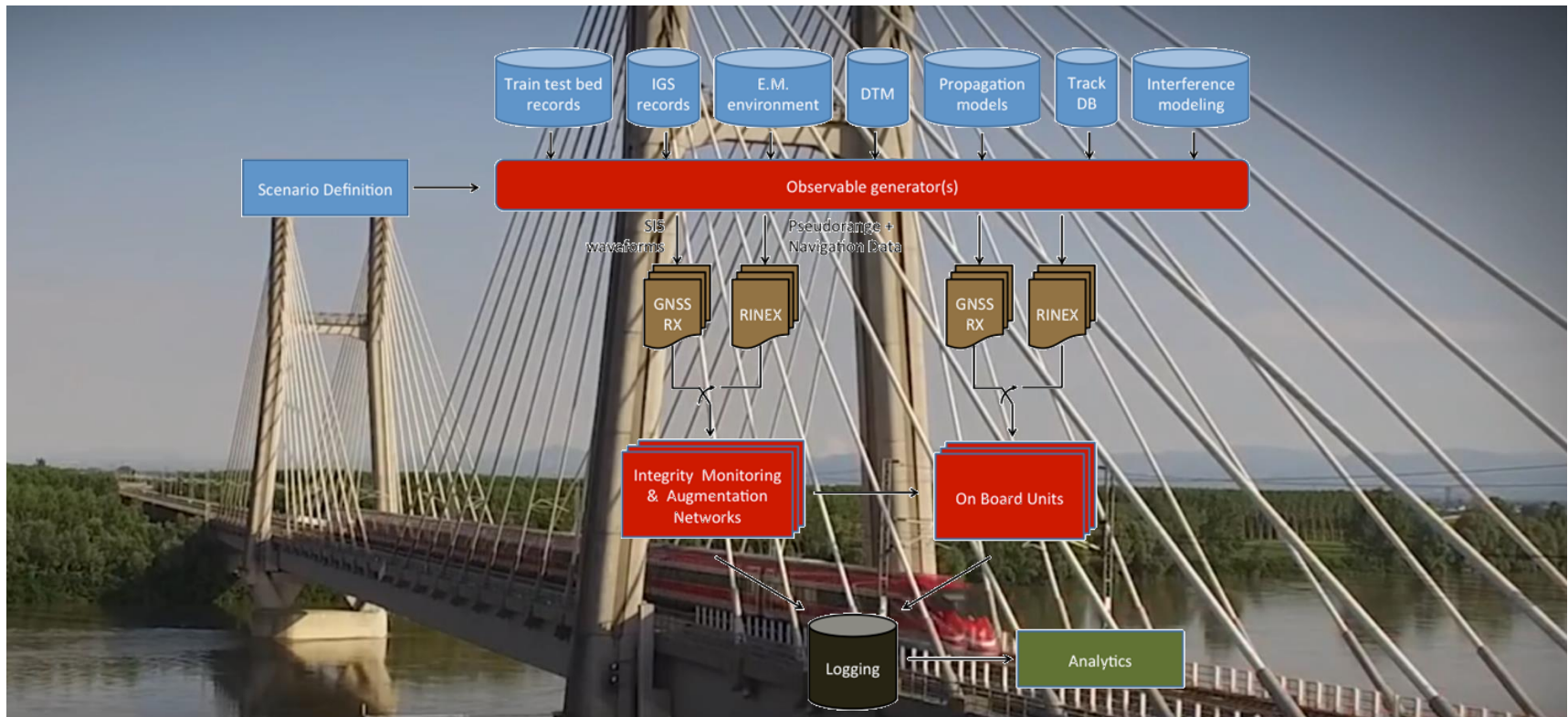
Train antennas



Performance Assessment: The Virtualized Testbed



- Assessing the performance of a Safety of Life system is a rather challenging task due to the fact that very small probabilities are involved.
- Approach: virtualized testbed, with
 - rich sets of data collected in a real railway environment (e.g., 3InSat & ERSAT EAV Test Bed),
 - historical time series related to rare GNSS SIS fault events (satellite malfunctions and atmosphere anomalous behaviors)
 - simulated faults for the new-coming constellations





- Multi-constellation architectures offer higher degree of flexibility to reach the SIL-4 level (recommended for high demanding accuracy in the railways applications).
- Nevertheless, the availability of an augmentation network is of paramount importance in reducing the Protection Level.
- Sharing as much as possible of the supporting (i.e., augmentation) infrastructure and on board processing, including new developments such as Advanced Receiver Autonomous Integrity Monitoring (ARAIM), with the avionics field is a key factor for cost effectiveness.
- Definition of a standard for the Railway High Integrity Navigation Overlay System is a key success factor for spreading the GNSS application into the rail.
- Definition of a strategic roadmap for the adoption of an international standard is of primary concern.

A photograph taken from the driver's perspective inside a train cab. The train is traveling across a large suspension bridge with white towers and cables. The tracks are visible in the foreground, and the surrounding landscape is green and hazy. The text 'THANKS FOR YOUR ATTENTION' is overlaid in red, bold, sans-serif font in the center of the image.

THANKS FOR YOUR ATTENTION



- A. Neri, F. Rispoli, P. Salvatori, "The perspective of adopting the GNSS for the evolution of the european train control system (ERTMS): a roadmap for standardized and certifiable platform", *ION GNSS+ 2015*, Tampa, FL, U.S.A;
- A. Neri, S. Sabina, U. Mascia, "GNSS and odometry fusion for high integrity and high available train control systems.", *ION GNSS+ 2015*, Tampa, FL, U.S.A;
- [Rispoli F.](#), [Neri A.](#), [Senesi F.](#), "Innovative train control systems based on ERTMS and satellite-public TLC networks", *WIT Transactions on the Built Environment*, Volume 135, 2014, Pages 51-61, 14th International Conference on Railway Engineering Design and Optimization, COMPRAIL 2014; Rome; Italy; 24 June 2014 through 26 June 2014;
- Neri, F. Rispoli, and P. Salvatori, "An analytical assessment of a GNSS based train integrity solution in typical ERTMS level 3 scenario", *ENC 2015*, Bordeaux, France;
- P. Salvatori, A. Neri, C. Stallo, and F. Rispoli, "Ionospheric Incremental Delay Models in Railway Applications", *IEEE International Workshop on Metrology for AeroSpace*, 2015, Benevento, Italy;
- Neri, A., Capua, R., Salvatori, P., "*High Integrity Two-tiers Augmentation Systems for Train Control Systems*", *ION Pacific PNT 2015*, Honolulu, April 20-23 2015;
- A. Neri, F. Rispoli, P. Salvatori, and A.M. Vegni, "A Train Integrity Solution Based on GNSS Double-Difference Approach," in *Proc. of ION GNSS+ 2014*, September 8-12, 2014, Tampa, FL, USA.
- A. Neri, A.M. Vegni, and F. Rispoli, "A PVT Estimation for the ERTMS Train Control Systems in presence of Multiple Tracks," in *Proc. of ION GNSS 2013*, September 16-20, 2013, Nashville, TN, USA.
- A. Neri, V. Palma, F. Rispoli, and A.M. Vegni, "Track Constrained PVT Estimation based on the Double-Difference Technique for Railway Applications," in *Proc. of EUSIPCO 2013*, September 9-13, 2013, Marrakech, Morocco.
- A. Neri, A. Filip, F. Rispoli, and A.M. Vegni, "An Analytical Evaluation for Hazardous Failure Rate in a Satellite-based Train Positioning System with reference to the ERTMS Train Control Systems," in *Proc. of ION GNSS 2012*, September 17-21, 2012, Nashville, TN, USA.